

MMATS

PRO AUDIO

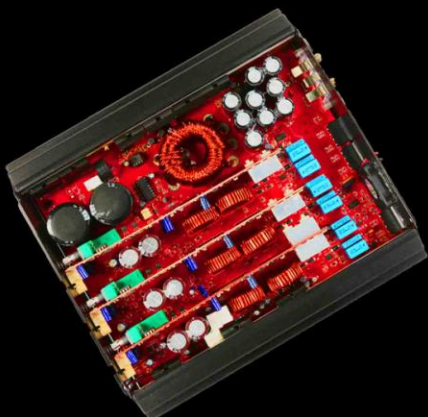
Amplifiers - Subwoofers - Speakers



Proudly Designed and Manufactured in the USA Since 1993

Amplifiers

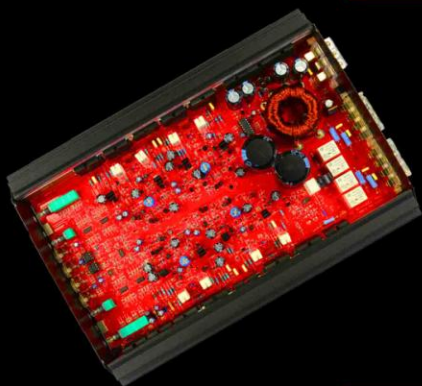
HiFi Series



Our HiFi Series, multi-channel full range Class D amplifier is the flagship of our American made amplifiers. Ultra Efficient, small chassis, Direct-FET MOSFETS and Burr-Brown pre-amp make this the most powerful and technologically advanced multi-channel on the market today. 50,000 mfd capacitance on the battery input and 25,000 mfd capacitance on the output section keeps the mids and highs totally clear even when the bass is pounding

Model	RMS Power Output	Dimensions
HiFi-6150D	6x150Wrms @ 4Ω (Stereo) 4x150Wrms @ 4Ω (Stereo) + 1x1000Wrms @ 1Ω (mono)	9.5"x2.25"x10"
HiFi-4250D	4x250Wrms @ 4Ω (Stereo) 2x800Wrms @ 4Ω (mono)	9.5"x2.25"x10"

SQ Series



This Series of Amplifiers is based on our traditional Class A/B topology. Thanks to in-house Surface Mount Technology(SMT) assembly and the use of TOSHIBA TO3P output transistors with 1% resistors, sound reproduction is extremely warm and smooth.

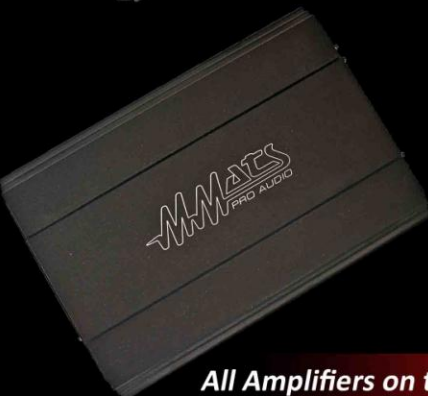
Model	RMS Power Output	Dimensions
SQ4100	4x100Wrms @ 4Ω (Stereo) 2x300Wrms @ 4Ω (Mono)	9.5"x2.25"x13"
SQ4160	4x160Wrms @ 4Ω (Stereo) 2x450Wrms @ 4Ω (mono)	9.5"x2.25"x18"

M Series



Ultra Efficient Class D topology reaching 83% efficiencies at full power, provides the biggest power in the smallest chassis. SMT assembly and 1% resistors round out a proven Power-House for any subwoofer system. 67,200 mfd capacitance on the battery inputs and 25,000 mfd capacitance on the outputs reinforcing the seat of the pants feeling that you can only get from a MMATS Amplifier. Leading many people to say "MMATS amplifiers are extremely underrated".

Model	RMS Power Output	Dimensions
M600.1	600Wrms@ 1Ω	9.5"x2.25"x6"
M600.2	600Wrms @ 2Ω	9.5"x2.25"x6"
M1000.1	1000Wrms @ 1Ω	9.5"x2.25"x7"
M1000.2	1000Wrms @ 2Ω	9.5"x2.25"x7"
M1400.1	1400Wrms @ 1Ω	9.5"x2.25"x8"
M1400.2	1400Wrms @ 2Ω	9.5"x2.25"x8"
M2000.05	2000Wrms @ .5Ω	9.5"x2.25"x10"
M2000.1	2000Wrms@ 1Ω	9.5"x2.25"x10"
M2000.2	2000Wrms@ 2Ω	9.5"x2.25"x10"
M3000.05	3000Wrms @ .5Ω	9.5"x2.25"x13"
M3000.1	3000Wrms @ 1Ω	9.5"x2.25"x13"
HD4000.05	4000Wrms @ .5Ω	9.5"x2.25"x13"
HD4000.1	4000Wrms @ 1Ω	9.5"x2.25"x13"



All Amplifiers on this Page are 100% Manufactured in our Jupiter FL Facility



Amplifiers

In keeping with our high levels of standards, this "Value" series is packed with features. No mistaking, value refers to pricing only! With Pro Audio RCA jacks and Heavy Duty battery and speaker connectors along with our in-house designed and engineered schematics, makes this series an excellent value. Features include; Variable 12dB/octave crossovers with 10X capability, bass boost at 45Hz and a mute circuit for "Zero" turn-on/off noise. All of this is in a compact 7.7" wide chassis.



MPA Series

Model	RMS Power Output	Dimensions
MPA270	2x70Wrms @ 4Ω	7.7"x2.1"x8"
MPA2200	2x200Wrms @ 4Ω	7.7"x2.1"x15.75"
MPA2300	2x300Wrms @ 4Ω	7.7"x3.1"x17.75"
MPA470	4x70Wrms @ 4Ω	7.7"x2.1"x10"
MPA4150	4x150Wrms @ 4Ω	7.7"x2.1"x19.75"
MPA1700D	1x700Wrms @ 1Ω Mono	7.7"x2.1"x10.75"

This line of amplifiers brings MMATS quality and performance to our friends on tight budgets. The perfect amplifier to improve any factory system. All 4 models are jam-packed with features making them extremely versatile to work with...perfect for the do-it-yourselfer too! Buy with confidence, we got your back with a 1 year parts and labor warranty.



Model	RMS Power Output	Dimensions
E300.2	2 x 150 Watts Peak @ 2Ω	11"x8.5"x2"
E600.4	4 x 150 Watts Peak @ 2Ω	12"x8.5"x2"
E600.1D	1 x 600 Watts Peak @ 1Ω	10"x8.5"x2"
E600.2D	1 x 600 Watts Peak @ 2Ω	11"x8.5"x2"
E1000.1D	1 x 1000 Watts Peak @ 1Ω	13"x8.5"x2"

E Series

Our MD Series targets the Marine, Power-Sports and Motorcycle industries and is a perfect fit when space is at a premium. Every model is marinated for moisture resistance to provide years of service. MOSFET power supplies and output sections with full Class D topology produce a supper clear sound and will run for hours and not go thermal. Features include, Hi/Lo level inputs, Marinated, double-sided PCB on all models, Active Crossovers, Bass boost at 45Hz, Auxiliary input and Gain control.



Model	RMS Power Output	Dimensions
MD4800	800 Watts Peak 4 x 80 Watts @ 4Ω stereo	4.25" x 8.5" x 1.6"
MD600.2	600 Watts Peak @ 1 Ω mono 300 Watts RMS @ 1 Ω mono	4.25" x 8.5" x 1.6"

MD Series

Subwoofers

JUGGERNAUT



Juggernaut Series III-maximum SPL for the street or competition. 9" wide magnets for higher gauss and greater flux density. Double stacked magnet for street versions (2000 Watts RMS continuous) Triple stacked magnets for competition (4000 Watts Burst only) Multi-layer spider assembly variable depending upon application, 4 different voice coil configurations from dual .5 Ω to dual 2 Ω . Radius-vented back plate provides direct cooling to the voice coil. Numerous DB Drag Racing World Records round out this incredible subwoofer!



DREADNAUT

The finest combination of SPL and Sound Quality available in a Subwoofer. Features include: 200 ounces of Double-stacked Y-30 magnets, 3" dual 2 Ω Aluminum wire and former Voice Coil, Double 8" Nomex spiders with reinforced center collars mounted mirror imaged from each other for precise linear excursion, ridged 12-spoke Cast-aluminum frame, radius vented back-plate for direct voice coil cooling, Exclusive integrated lead-wire assembly and 1500 Watts RMS power handling round out this exceptional subwoofer. Available in 12", 15" and 18" models. Recommended large ported only.



MONSTER



"Mini Juggernaut"! Yes, that's right. You want to come close to hanging with the Big Guys', this is the subwoofer to do it with without breaking the bank From its 140 ounce double Y-30 magnet assembly to its Kevlar impregnated conebody, this subwoofer has what it takes to make an impression. Other features include: 3" Dual 2 Ω Copper wire and Aluminum Voice Coil, dual 8" flat Nomex spider, radius vented back-plate for direct voice coil cooling and spring-loaded connectors round out this beast. Available in 10", 12" and 15" models. Throw them a 1000 watts of power and hold on! *Of course, a Juggernaut will give you approximately 3dB more SPL at its 2000 watt rating.

All Subwoofers on this Page are 100% Manufactured in our Jupiter, FL Facility 

Subwoofers



Procast, formerly known as P3 series, has been our best-selling subwoofer for over 10 years. It absolutely excels in Band-pass enclosures. Ported, you will experience a 3dB gain at resonate frequency and sealed is extremely smooth and has a low F3 as well. Features include, 3" Aluminum/Kapton voice coil, 8" flat-spider suspension, Polypropylene cone and dustcover, 140 ounce double stacked magnets and 700 watt power handling. Proudly made in the USA!

50 mil polypropylene talc filled cone (Talc helps to control flex in the cone body, this leads to a more accurate reproduction of the music material.
High excursion 1.1" wide x .70" tall polyester foam surround, extremely flexible and very linear heavy duty heavy duty cast aluminum frame for less frame flex
3" Kapton voice coil with a 1.25" winding length.
Nomex reinforced collar for superior heat insulation
140 ounce double-stacked magnets surrounded by a rubber boot
Hyper-extended pole piece. Creates a more linear magnetic field
Nomex 8" flat spider provides symmetrical control of the voice coil throughout its excursion thus improving SQ
1" vented pole piece for maximum thermal efficiency

Procast Series

Formerly known as the P2.5, the Pro Series subwoofers are some of the best sounding most versatile subs on the market. Often used in SQ installations or in a smaller sealed enclosure where space is a premium.

40 mil polypropylene talc filled cone
High excursion tall polyester foam surround, extremely flexible and very linear heavy duty 16 guage stamped steel basket for less frame flex
2.5" Kapton voice coil with a 1.25" winding length. Nomex reinforced collar for superior heat insulation
100 ounce double-stacked magnets surrounded by a rubber boot
Nomex flat spider provides symmetrical control of the voice coil throughout its excursion thus improving SQ



Pro Series



The P2 Series subwoofers are some of the best sounding most versatile subs on the market. Often used in SQ installations or in a smaller sealed enclosure where space is a premium. One of our most musical subwoofers. High excursion .82" wide x .65" tall polyester foam surround, extremely flexible and very linear
heavy duty 16 guage stamped steel basket for less frame flex
2" Kapton voice coil with a 1.25" winding length. Nomex reinforced collar for superior heat insulation
60 ounce double-stacked magnets surrounded by a rubber boot
Nomex flat spider provides symmetrical control of the voice coil throughout its excursion thus improving SQ

P2 Series

All Subwoofers on this Page are 100% Manufactured in our Jupiter, FL Facility 

Subwoofers

P1 Series



The P1 series of subwoofers offers an exceptional value. They are designed to play loud and hard and are built with high quality components. Designed to work well in sealed or ported enclosures. 250 watts RMS power handling, 50 oz magnet assembly, radius venting on the back plate for thermal efficiency, designed for sealed or ported enclosures large bumped back plate for high excursion dual 4 ohm coils

XS Series

Our XS10 Shallow Subwoofer was developed by our in-house Design and Engineering staff. With our Prototypes in the field, the most common comment was "how did you get so much performance into an affordable woofer". Simple, by raising the MMS and BL product and lengthening the voice coil. Features include: 3.5" mounting depth for the 10" and 4.5" for the 12", 250 Wrms power handling, available dual 4 and single 4 ohm voice coils, 6" flat spider, woven leads and radius backplate venting.



Components Coaxials

GF Series



GF61cs Component sets are available in 6.5" only. Consisting of a 6.5" steel frame, glass fiber midrange driver, and a 1" poly-acrylic tweeter. Crossovers contain Mylar capacitors as well as air-core inductors for a cleaner more transparent sound. An excellent upgrade to any sound system. Power handling is rated at 60 watts RMS.

Pro Series

Pro Series Component sets are available in 4", 5.25", 6" as well as 3-way options Kevlar impregnated cone bodies and soft supple rubber surrounds gives these German components an "Audiophile" response equal to speakers costing twice as much. A pair of 1" soft-dome tweeters finish off this excellent combination. Frequency response from 60Hz to 20KHz and power handlings from 50 to 100 watts RMS.



CF Series



CF Series Components are available in 6.5" sets only. A true carbon fiber cone body that exhibits a very strong yet accurate tonal quality. The 1" soft dome tweeters are the smallest we have ever designed and pack a real punch with one of the nicest swivel features we've seen. Crossovers contain Mylar capacitors as well as Air-core inductors. Continuing the Hi-Fi build of these components. Power rating is a stout 125 watts RMS.

LS Series

LS Coaxials are available in 4", 5.25", 6.5", 5" x 7", and 6" x 9". Cone bodies are a blend of paper and cotton fibers for a very "natural" sound. High excursion suspension for increased frequency response. Mylar neodymium tweeter produces a very efficient yet smooth response in a small package. Power handling ranges from 30 to 60 watts.



PS Series



Point Source Coaxials are available in 6.5", 5" x 7" and 6" x 9". Cone bodies consist of a very lightweight glass fiber material that is extremely fast and produces an excellent low frequency response. The tweeter are neodymium soft domes located at the base of the cone body, hence the name "Point Source". Imaging is greatly improved over standard post mount assemblies. Power handling is strong at 75 to 100 watts.

All Speakers on this Page are Designed and Engineered in Our Jupiter, FL Facility



Pro Sound / Louds



Our **DTX Series**, are available in 10", 12" and 15" models. Their heritage is midbass/midrange leaning a little heavier towards midrange. Reaching frequencies of 6000 Hz is quite easy and the tonal qualities are unparalleled. Features include; 300 Watts RMS and 600 Watts Program, 2.5" edge-wound aluminum voice coil and Kapton former, 70 ounce magnet and a flat-spider suspension round out this excellent performer.

DTX speakers are 100% Manufactured in our Jupiter, FL Facility



DTX Series

PA Series

601



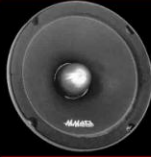
Good Midbass/Midrange performer
Freq. Resp. 120Hz – 5000Hz
Power: 75 Wrms – 150 W-program
1.5" 4 or 8Ω Copper / Kapton VC
SPL: 90 dB
30 oz. Magnet

801



Good Midbass/Midrange performer
Freq. Resp. 100Hz – 4500Hz
Power: 75 Wrms – 150 W-program
1.5" 4 or 8Ω Copper / Kapton VC
SPL: 91 dB
30 oz. Magnet

610



Strongest Mid/Upper - Mid performer
Freq. Resp. 400Hz – 8000Hz
Power: 75 Wrms – 150 W-program
1.5" 8Ω Copper / Kapton VC
SPL: 96 dB
Depth: 2.50"

810



Excellent Midbass/Midrange performer
Freq. Resp. 100Hz – 4500Hz
Power: 100 Watts RMS – 200 watts program
2" 5.5Ω Copper / Kapton VC
SPL: 92 dB
50 oz. Magnet

630



Excellent SQL Midrange/Midbass
Freq. Resp. 200Hz – 6000Hz
Power: 150 Wrms – 150 Watts program
2" - 8Ω Aluminum/Copper VC
SPL: 95 dB
2.65" Mounting Depth

820



"Loud" Midrange performer
Freq. Resp. 200Hz – 6000Hz
Power: 100 Watts RMS – 200 watts program
1.6" 5.5Ω Copper / Kapton VC"
SPL: 94.5 dB
3.5" Mounting Depth

Compression Drivers / Tweeters

CD1



Full Neo Compression Tweeter
Frequency Response: 3.5KHz – 18KHz
Power: 50 watts RMS / 100 Watts Program
1" - 8Ω Voice Coil with Ferro-Fluid cooling
Efficiency: 108dB 1watt / 1 meter
Mounting depth: 2"

ST1



1.25" Full Neo Super Tweeter
Frequency Response 3.5KHz to 20KHz
100 watts RMS power handling
1.25" 8Ω Voice Coil with Ferro-Fluid cooling
115 dB efficiency.
1.650" Mounting depth.

DTX25T



Full Neo Compression Tweeter
Frequency Response: 4.5KHz – 18KHz
Power: 50 watts RMS / 100 Watts Program
1" - 8Ω Voice Coil with Ferro-Fluid cooling
Efficiency: 110dB 1watt / 1 meter
Mounting depth: 2"

DTX150



1" Compression Driver
Frequency Resp. 2KHz to 15KHz
Power 50 Watts RMS / 100 Program
1.1" 8Ω Voice Coil
Efficiency 102db 1watt / 1 meter
Mounting Depth 1.65"

DTX250



Recommended for Midrange applications
Frequenct Response 500hz - 8000hz
Power: 100Watts RMS / 200 Watts Program
2" - 8Ω Voice Coil
Efficiency 107db 1Watt / 1 Meter

GFT-1



Titanium Dome Tweeter
Frequency Response 3.5k to 22k
Power 75 Wrms / 125 Program
4Ω Voice coil
92db 1watt / 1 meter
Mounting Depth .75"

Processors

MPS



5 Band EQ / Crossover
10 Volt Line Driver.
4 independent gains.
Sub-sonic filter 15Hz/30Hz.
Low-pass filter 40 to 120Hz.
Subwoofer Level volume control.
Front/Rear fader control
LED Backlit retractable potentiometers.
Black & Silver face plate included

CX6



6 channels in / 12 channels out
Hi and Lo input level thru the RCA's
Remote Subwoofer level control
Master and independent gain
2 / 4 / 6 channel input selector
15 volts RMS line-driver
High / Tweeter: 1KHz – 12KHz
Sub-sonic Filter: 10Hz – 30Hz
Signal to Noise Ratio: -105dB



Special Thanks To: MC Customs, Monster Sound ,Tint Wizard Sounds and Underground Auto Styling
15132 Park of Commerce Blvd Jupiter,FL 33478 (561) 842-0600 www.MMATSProAudio.com

